

Overview

Frequency Band

860MHz-960MHz

Chip

Impinj M830

Antenna Dimensions

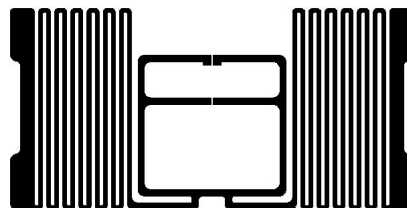
15x30mm/0.591x1.18

International Standard

ISO/IEC 18000-63 Type C

Applications

Apparel

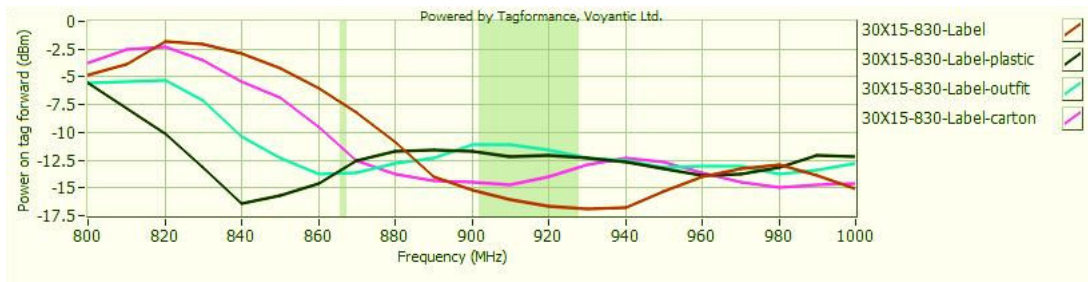


This antenna is designed for logistics applications. It supports omnidirectional reading, and its high efficiency and excellent performance make it widely used in warehouse management, logistics and transportation fields etc. The deployment of RFID technology in warehouse management and logistics transportation will help monitor the flow direction of products and ensure the safety of cargo transportation.

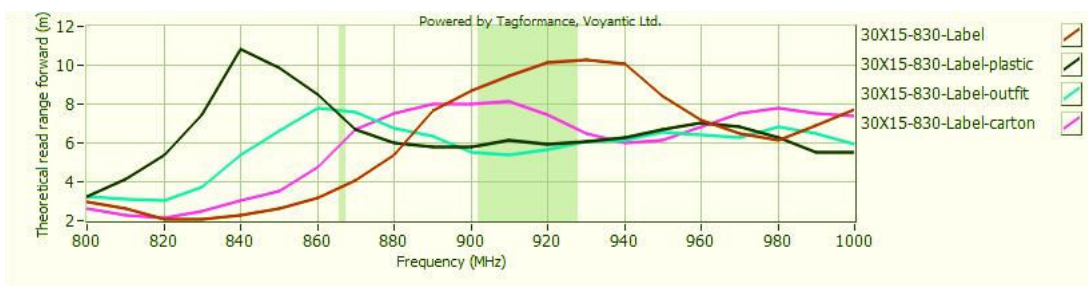
Technical Features

Model			
Delivery Format	Dry Inlay	Wet Inlay	Label
EPC Memory	128Bits	128Bits	128Bits
User Memory	0Bits	0Bits	0Bits
Die-cut Dimension	-	35*18mm	35*18mm
Inlay Substrate	50um PET	50um PET	50um PET
Standard Pitch	22.225mm	22.225mm	22.225mm
Web Width	82mm	82mm	85mm
Core Size	76.2mm/3inch	76.2mm/3inch	76.2mm/3inch
Quantity / Reel	10000 ± 300Pcs/Reel	2500 ± 2Pcs/Reel	2500 ± 2Pcs/Reel
Operating Temperature	-20°C to +50°C (20% to 80%RH)		
Remarks	Wet inlay and Label are regular sizes. Other sizes can be customized.		

Sensitivity



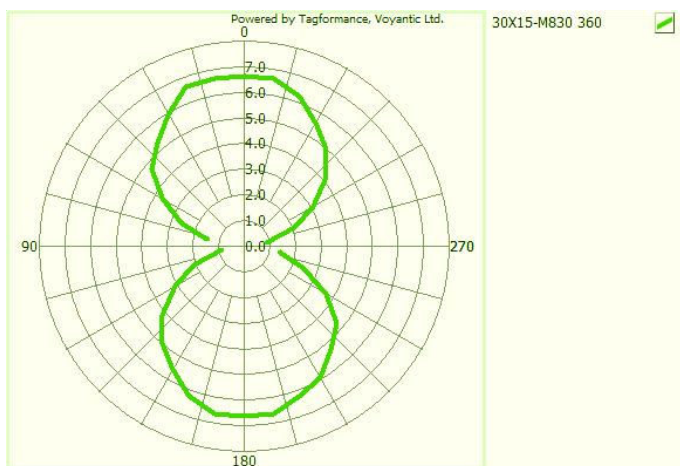
Read Range



Sensitivity&Read Rang Test power: 4W EIRP

For countries that allow 2W ERP, please reduce the result by 11%

Orientation sensitivity



All graphs are indicative: performance in real life applications may vary.